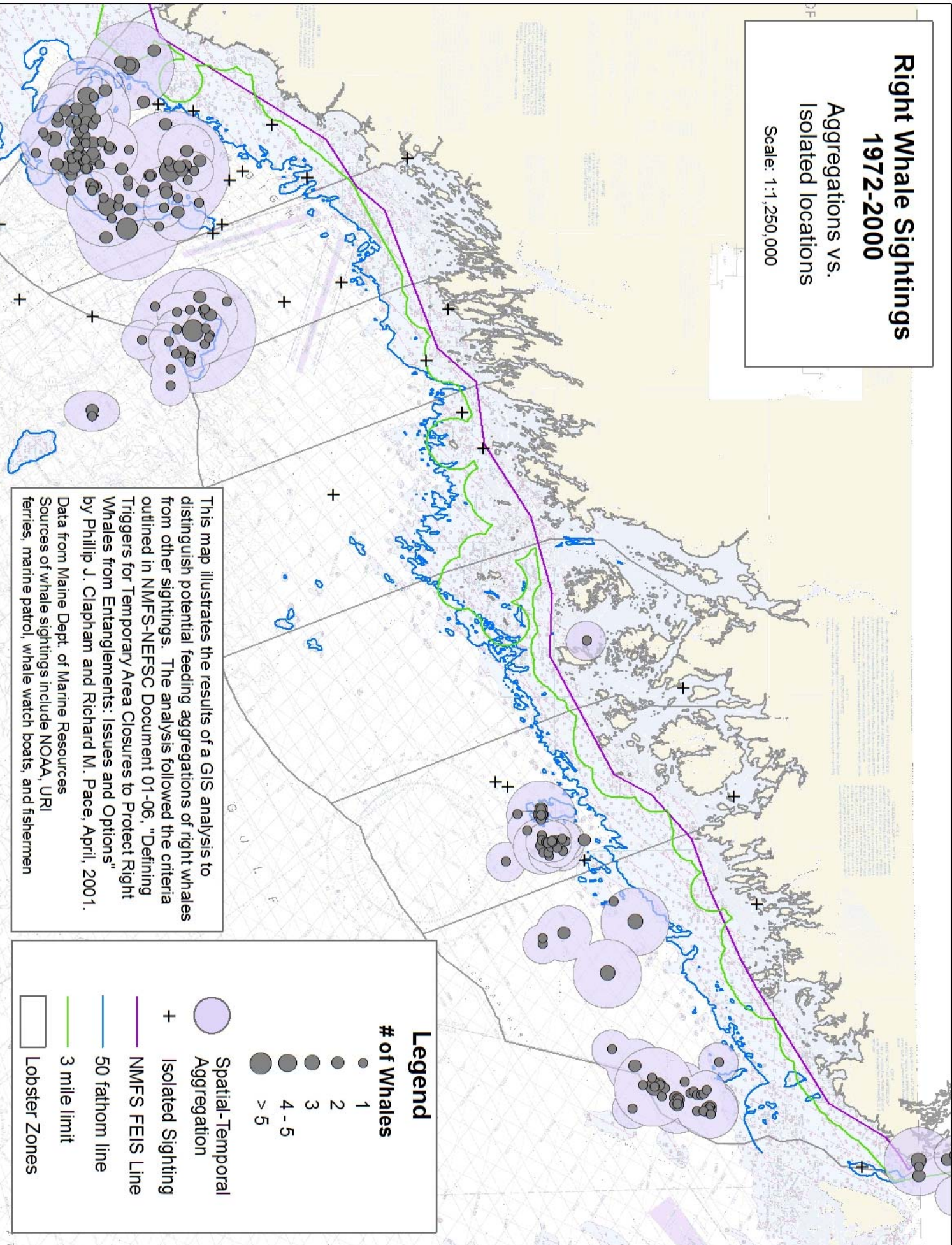


**Appendix 3**  
**Feeding Aggregations of Right Whales Along the Maine Coast**  
**1967 to 2005**

# Right Whale Sightings 1972-2000

Aggregations vs.  
Isolated locations

Scale: 1:1,250,000



This map illustrates the results of a GIS analysis to distinguish potential feeding aggregations of right whales from other sightings. The analysis followed the criteria outlined in NMFS-NEFSC Document 01-06, "Defining Triggers for Temporary Area Closures to Protect Right Whales from Entanglements: Issues and Options" by Phillip J. Clapham and Richard M. Pace, April, 2001. Data from Maine Dept. of Marine Resources Sources of whale sightings include NOAA, URI ferries, marine patrol, whale watch boats, and fishermen

Legend	
<b># of Whales</b>	<b>Spatial-Temporal Aggregation</b>
● 1	● Isolated Sighting
● 2	● NMFIS FEIS Line
● 3	● 50 fathom line
● 4 - 5	● 3 mile limit
● > 5	● Lobster Zones

